

FILED

SEP 14 2021

CLERK OF THE SUPERIOR COURT
BY: J. BRIGMON, DEPUTY CLERK

LAW OFFICE OF CHAD MORGAN, APC
Chad D. Morgan, Esq. SBN 291282
PO Box 1989 PMB 342
40729 Village Drive #8
Tel: (951) 667-1927
Fax: (866) 495-9985
chad@chadmorgan.com

Attorney for All Petitioners

SUPERIOR COURT OF THE STATE OF CALIFORNIA
FOR THE COUNTY OF SHASTA

**Shasta General Purpose Committee/Recall
Shasta; Tim Saunders; Ronnean Lund; and
Melody Fowler,**
Petitioners,

vs.

Cathy Darling Allen, in her official capacity as
County Clerk and Registrar of Voters for
Shasta County; and
DOES 1 through 25, inclusive,
Respondents.

Case No.: **198188**

Statutory Priority: CCP § 35:
Election Matter

Deadline for Relief:
September 29, 2021

Verified Petition Writ of Mandate
[CCP § 1085; Elec. Code § 13314]

BY FAX

1 LAW OFFICE OF CHAD MORGAN, APC
2 **Chad D. Morgan, Esq. SBN 291282**

3 PO Box 1989 PMB 342

4 40729 Village Drive #8

5 Tel: (951) 667-1927

6 Fax: (866) 495-9985

7 chad@chadmorgan.com

8 Attorney for All Petitioners

9
10 SUPERIOR COURT OF THE STATE OF CALIFORNIA
11 FOR THE COUNTY OF SHASTA
12
13

14 **Shasta General Purpose Committee/Recall**
15 **Shasta; Tim Saunders; Ronnean Lund; and**
16 **Melody Fowler,**
17 Petitioners,

18 vs.

19 **Cathy Darling Allen**, in her official capacity as
20 County Clerk and Registrar of Voters for
21 Shasta County; and
22 DOES 1 through 25, inclusive,
23 **Respondents.**
24
25
26
27
28

Case No.:

Statutory Priority: CCP § 35:
Election Matter

Deadline for Relief:
September 29, 2021

Verified Petition Writ of Mandate
[CCP § 1085; Elec. Code § 13314]

1 **TO THE HONORABLE JUDGES OF THE SUPERIOR COURT:**

2 By this Verified Petition, Petitioners petition this Court for a writ of mandate as follows:

3 1. This action is brought in the public interest to enforce important Constitutional rights,
4 namely the right of initiative, referendum, and recall in Shasta County.

5 2. Petitioners are the proponents of recall petitions seeking to recall three members of the
6 Shasta County Board of Supervisors: Joe Chimenti (District 1), Leonard Moty (District 2), and
7 Mary Rickert (District 3).

8 3. Due to Shasta County's ongoing fire emergencies, the 120-day deadline for Petitioners to
9 submit their recall petitions, as applied to instant circumstances, unconstitutionally infringes on
10 the public's recall right.

11 4. Petitioners seek an order from this Court extending the 120-day deadline from September
12 29, 2021 to November 4, 2021 or other appropriate relief to make up for the 34 days lost due to
13 wildfire evacuations and unhealthy air quality levels.
14

15 **PARTIES**

16 5. Petitioner **Shasta General Purpose Committee/Recall Shasta** is a political campaign
17 committee focused on important issues in and around Shasta County. The committee has its
18 principal place of business in Shasta County and its membership includes electors and taxpayers
19 in each of the three supervisorial districts described herein who are also taxpayers that pay sales,
20 income, and property taxes in and for the benefit of Shasta County. The committee has been
21 raising money and collecting signatures to qualify the three recalls for a future election.

22 6. Petitioner **Tim Saunders** is an individual elector residing in Shasta County Supervisor
23 District Number 1. Saunders is a proponent of the proposed recall against Shasta County's
24 District 1 Supervisor, Joe Chimenti.

25 7. Petitioner **Ronnean Lund** is an individual elector residing in Shasta County Supervisor
26 District Number 2. Lund is a proponent of the proposed recall against Shasta County's District 2
27 Supervisor, Leonard Moty.
28

1 8. Petitioner **Melody Fowler** is an individual elector residing in Shasta County Supervisor
2 District Number 3. Fowler is a proponent of the proposed recall against Shasta County's District
3 Supervisor, Mary Rickert.

4 9. Respondent **Cathy Darling Allen** (the Registrar) is, and at all relevant times mentioned
5 in this Petition, was the County Clerk and Registrar of Voters for the County of Shasta, a general
6 law county. In this role, she is the County's elections official. As such, she is charged by law with
7 administering County elections and is the elections official responsible for recalls of county
8 officers. The Registrar is sued in her official capacity.

9
10 10. The true names of Respondents DOES 1 through 25, inclusive, are unknown to
11 Petitioner, who therefore brings this action against DOES 1 through 25, inclusive, by such
12 fictitious names and will seek leave of this Petition to show their true names, identities, and
13 capacities when they have been ascertained.

14 **JURISDICTION AND VENUE**

15 The relief sought is within the jurisdiction of this Court for the following reasons:

16 11. This action relates to the proposed recall of county officials in Shasta County.

17 12. Respondent is named in her official capacity as an agent of the government of the County
18 of Shasta.

19 **PRIORITY MATTER**

20 13. Time is of the essence. In the absence of judicial relief extending the upcoming
21 September 29, 2021 deadline for Petitioners to submit recall petitions, the Registrar will be
22 prohibited from accepting Petitioner's recall petitions after 5:00 p.m. that day. Petitioners would
23 have to completely start over and will have lost the time and resources invested in the process to
24 date. This will constitute great waste and frustrate the will of voters who have already signed the
25 recall petitions. Expedited scheduling of this writ proceeding, consistent with priority authorized
26 under section 35 of the Code of Civil Procedure and section 13314 of the Elections Code is both
27 necessary and appropriate.
28

THE RECALL PROCESS

14. The right of Californians to pursue initiative, referendum, and recall is contained in Article II of the California Constitution.

15. “Recall is the power of the electors to remove an elective officer.” (Cal. Const., art. II, § 13.) Petitioning for the recall of a government official is another form of the people’s right to “instruct their representatives, petition government for redress of grievances, and assemble freely to consult for the common good.” (Cal. Const., art. I, § 3, subd. (a).)

16. The Constitution provides signature requirements for state officers. As to officers holding statewide office, recall petitions must be signed by 12 percent of the electors who last voted for that office. (Cal. Const., art. II, § 14, subd. (b).) As to state officers holding less than statewide office (*i.e.*, Assemblymembers, Senators, Board of Equalization Members, and trial and appellate court judges), the signature requirement is 20 percent of the electors for the last vote of the office. (*Ibid.*) Signature requirements for local officers is otherwise left to the Legislature. (Cal. Const., art. II, § 19; see also *id.* at § 16.)

17. The statutory framework for recalls starts in Elections Code section 11000.

18. Because Petitioners’ recall targets members of the Shasta County Board of Supervisors, the Registrar is the elections official responsible for the recall. (Elec. Code § 11002, subd. (a).)

19. The applicable process is as follows:

- a. A recall is initiated by “proponents” who are electors in the electoral jurisdiction of the officer they seek to recall. (Elec. Code § 11005.) As stated above, Petitioners satisfy this requirement.
- b. They start the process by serving a notice of intention to circulate a recall petition on the officer to be recalled. (Elec. Code § 10006; see also Elec. Code §§ 11020, 11021 [notice requirements].) Petitioners satisfied this requirement.
- c. After completing prerequisite requirements (see Elec. Code § 11020 *et seq.*), the proponents must submit the proposed recall petition to the elections official for

1 approval. (Elec. Code § 11042.) They may not circulate the recall petition until
2 the elections official approves a proposed petition. (*Id.* at subd. (d).) The Registrar
3 approved Petitioners' petitions on June 1, 2021.

4 d. Elections Code sections 11220 and 11221 set forth the signature requirement. To
5 qualify the recalls for the ballot, Petitioners must obtain signatures from 20
6 percent of each district's registered voters within 120 days because each district
7 has between 10,000 and 50,000 registered voters. (Elec. Code §§ 11220, subd.
8 (a)(4), 11221, subd. (a)(3).)

9 e. Applied to Petitioners' proposed recall, they have until September 29, 2021 to
10 collect 4,392, 4,308, and 4,432 signatures in Districts 1, 2, and 3, respectively.
11

12 20. Recalls for local officials are different from recalls of state officials because the number of
13 signatures required to recall a local official is based on the total number of registered voters
14 whereas the signatures necessary to recall a state official is based on the number of people who
15 last voted for the office. (Compare Cal. Const., art. II, § 14, subd. (b) with Elec. Code § 11221,
16 subd. (a).) If the signature requirements were 20 percent of the electors who last voted for that
17 office rather than 20 percent of the registered voters, then signature requirements would be
18 different as follows:

19 a. Joe Chimenti District 1: 2,445 signatures because there were 12,223 votes cast
20 when he was elected in the 2018 General Election. The number of required
21 signatures is more than 80 percent higher than this amount.

22 b. Leonard Moty District 2: 2,024 signatures because there were 10,118 votes cast
23 when he was elected in in the 2020 Primary Election. The number of required
24 signatures is more than 96 percent higher than this amount.

25 c. Mary Rickert District 3: 1,673 signatures because there were 8,362 votes cast when
26 she was elected in the 2020 Primary Election. The number of required signatures
27 is more than 158 percent higher than this amount.
28

FEDERAL CONSTITUTIONAL PROTECTIONS

21. A Californian's right to initiative, referendum, and recall necessarily arises out of their "right to instruct their representatives, petition government for redress of grievances, and assemble freely to consult for the common good." (Cal. Const., art. I, § 3, subd. (a).) This is similar to but offers greater protections than the First Amendment to the United States Constitution.

22. The First Amendment to the U.S. Constitution, applicable to the states through the Fourteenth Amendment, provides that "Congress shall make no law,. abridging the freedom of speech, or of the press; or the right of the people to peaceably assemble, and to petition the government." (U.S. Const, amend. I.)

23. Although the U.S. Constitution does not require states to provide the right of initiative, "a state that adopts an initiative procedure violates the federal Constitution if it unduly restricts the First amendment rights of its citizens who support the initiative." (*Taxpayers United for Assessment Cuts v. Austin* (6th Cir. 1993) 994 F.2d 291,295.)

SHASTA COUNTY SUPERVISORIAL DISTRICTS

24. Shasta County is divided into five supervisorial districts.

25. Attached as **Exhibit 1** is a true and correct copy of a map, obtained from the County's online mapping system at <<https://maps.co.shasta.ca.us/SupervisorDistricts/>>, showing the County and its five supervisorial Districts.

26. District 1 is generally described as the City of Redding. Attached as **Exhibit 2** is a true and correct copy of a detailed map of this district obtained from the Shasta County Registrar of Voters at <https://www.elections.co.shasta.ca.us/wp-content/uploads/2013/09/District-1-Enhanced.pdf>>, showing the boundaries of District 1. In addition to the City of Redding, District 1 includes the area north of Redding between I5 and the river.

27. District 2 is in the southwest portion of the County. Attached as **Exhibit 3** is a true and correct copy of a detailed map of this district obtained from the Shasta County Registrar of Voters at <<https://www.elections.co.shasta.ca.us/wp-content/uploads/2013/09/District-2->

Enhanced.pdf>, showing the boundaries of District 2. District 2 includes the western part of the county in the area between Trinity National Forest in the north-west, I5 in east except the City of Redding, and Mendocino National Forest in the South, including the communities of Centerville, French Gulch, Happy Valley, Igo/Ono, Keswick, Girvan, Platina, Shasta, South Redding, Verde Vale, Keswick, Kett, and Whiskeytown. District 2 in particular has suffered from repeated fires over the years, with many residences destroyed and never replaced. For this reason, Petitioner is informed and believes that voter registration numbers are inflated compared to prior elections.

28. District 3 is in the northeast portion of the County. Attached as **Exhibit 4** is a true and correct copy of a detailed map of this district obtained from the Shasta County Registrar of Voters at <<https://www.elections.co.shasta.ca.us/wp-content/uploads/2013/09/District-3-Enhanced.pdf>>, showing the boundaries of District 3. District 3 is bounded on the east by Lassen National Forest and in the south by Hwy 44 (roughly). District 3 includes the communities of Bella Vista, Big Bend, Burney, Cassel, Fall River Mills, Hat Creek, McArthur, Montgomery Creek, Oak Run, Old Station, Palo Cedro, Pittville, Round Mountain, and Whitmore.

AIR QUALITY RATINGS

29. In *Bakersfield Citizens for Local Control v. City of Bakersfield* (2004) 124 Cal.App.4th 1184, 1219, a California court recognized that “[i]t is well known that air pollution adversely affects human respiratory health.” It further recognized that “[a]ir quality indexes are published daily in local newspapers, schools monitor air quality and restrict outdoor play when it is especially poor and the public is warned to limit their activities on days when air quality is particularly bad.” (*Id.* at pp. 1219-1220.)

30. The air quality index, AQI, was created by the United States Environmental Protection Agency (EPA), as required by the Clean Air Act, 42 U.S.C. § 7401 *et seq.* (42 U.S.C. §§ 7409, 7619; see also 40 C.F.R. § 58.50 [reporting requirements]; *American Trucking Associations, Inc. v. E.P.A.* (D.C. Cir. 2002) 283 F.3d 355 [unsuccessful challenge to EPA air quality standards].)

1 31. The Shasta County Health and Human Services Agency, the Shasta County Air Quality
2 Management District, and other local authorities report local air quality information in Shasta
3 County in compliance with EPA standards and regulations.

4 32. EPA guidelines describe six categories of AQI ratings that range from Good to
5 Hazardous.

6 a. Level One: Good (AQI 0-50)

7 b. Level Two: Moderate (AQI 51-100)

8 c. Level Three: Unhealthy for Sensitive Groups (AQI 101-150)

9 d. Level Four: Unhealthy (AQI 151-200)

10 e. Level Five: Very Unhealthy (AQI 201-300)

11 f. Level Six: Hazardous (AQI 301-500)

12
13
14 33. According to these guidelines, everyone needs to be concerned about air quality starting
15 at Level Four (Unhealthy) and should limit their outdoor activities.

16 **EFFECT OF FIRES ON RECALL PETITIONS**

17 34. The 2021 fire season has been one of the worst on record.

18 35. Significant fires in Shasta and adjoining counties have included the Dixie, McFarland,
19 Monument, River Complex, Antelope, McCash, and Beckwourth Complex fires.

20
21 36. Of these, the Dixie Fire has been most significant. It started on July 22, 2021 and, at
22 nearly one million acres, has grown to become the largest single (non-complex) wildfire in state
23 history. Nearly two months after it started, it is still uncontrolled and continues to grow. It has
24 burned in Butte, Plumas, Lassen, Shasta, and Tehama Counties and has created unhealthy air
25 throughout the Western United States into Utah and Colorado.

26 **A. Effect of Fires on Air Quality**

27 37. These fires, combined with others burning across the Western United States, have
28 created some of the worst air quality Shasta County has ever had.

1 38. Since June 1, 2021, Shasta County has issued 12 advisories urging people to stay indoors
2 because wildfire smoke made the air unsafe to breathe. These advisories cover the following 26
3 days: July 23 to 26, July 30 to August 1, August 4, August 5, August 11 to 13, August 13 to 15,
4 August 16, August 20 to 22, August 26, August 30, September 3 to 6, and September 8 to 9. True
5 and correct copies of these advisories are attached as **Exhibit 5**. On these days, people were
6 advised to remain indoors with their windows closed.

7 39. In response to a public records request, Shasta County provided its hourly AQI data for
8 the period from June 1, 2021 through September 12, 2021. A true and correct copy of that data,
9 which includes AQI ratings from monitoring stations in Anderson and Redding, is Attached as
10 **Exhibit 6.** -

- 11 a. Anderson Monitoring Station: During this period, the maximum AQI reading
12 each day reached the Unhealthy level or worse on 23 days. Of these, 19 were
13 Unhealthy, three were Very Unhealthy, and one was Hazardous.
- 14 b. Redding Monitoring Station: During this period, the maximum AQI reading each
15 day reached the Unhealthy level or worse on 29 days. Of these, 20 were
16 Unhealthy, four were Very Unhealthy, and five were Hazardous.
- 17 c. From this data, AQI levels were Unhealthy or worse at both the Redding and
18 Anderson monitoring stations on July 23-24, August 6-8, 12-20, 26-31, September
19 1, and 8-9. AQI levels were Unhealthy or worse at the Redding station alone on
20 July 2, August 21-22, September 7, 10, and 13. There were 29 days where the air
21 quality at one station or the other was classified as Unhealthy or worse.
22

23 40. These official readings do not necessarily show how bad the air quality has been
24 throughout the entire County. Of the County's three air monitoring stations, only the Redding
25 and Anderson stations monitor for particulate matter (smoke). It stands to reason those areas
26 closer to the fires would have air quality worse than the City of Redding. Petitioners and their
27 supporters have observed this while circulating and attempting to circulate their petitions.
28

1 41. In addition to the official monitoring stations, Shasta County has deployed unofficial
2 sensors. From the County's website at <[https://www.co.shasta.ca.us/index/drm/air-quality/air-](https://www.co.shasta.ca.us/index/drm/air-quality/air-quality-map)
3 [quality-map](https://www.co.shasta.ca.us/index/drm/air-quality/air-quality-map)>, people are directed to
4 <<https://www.purpleair.com/map?opt=1/mAQI/a10/cC0#11/40.5743/-122.3627>> in order to
5 view information from the County's sensors, which show significant variability throughout the
6 county. For example, the one-week averages for all sensors ranges from 124 (Unhealthy for
7 Sensitive Groups) to 197 (Unhealthy), which is just three AQI points away from a Very
8 Unhealthy one-week average. Additionally, if these are averages, it stands to reason that there
9 were also periods of time where the air quality was Hazardous. Attached as **Exhibit 7** is a true and
10 correct copy of the map printed from
11 <<https://www.purpleair.com/map?opt=1/i/mAQI/a10080/cC0#10.3/40.5006/-122.3519>> on
12 September 11, 2021 showing the one-week average for all outdoor sensors in the County.

13 42. Based on continued fire activity, Petitioners anticipate additional advisories and days of
14 Unhealthy air between now and their September 29, 2021 deadline.

15 **B. Fire-Related Evacuation Orders**

16 43. These fires have resulted in evacuation orders in Shasta County. The County's website,
17 Shasta Ready, lists those orders. Attached as **Exhibit 8** is a true and correct copy of the County's
18 wildfire information, printed from <<https://www.co.shasta.ca.us/ready/wildfire/overview>>.
19 This information describes the following evacuations:

- 20 a. August 16-26: McFarland Fire evacuation order near Platina (District 2).
- 21 b. August 25: Dixie fire evacuation orders and warnings near Hat Creek and Old
- 22 Station (District 3).
- 23 c. August 27-28: McFarland Fire evacuation warning near Platina (District 2).
- 24 d. September 8, 2021: Dixie fire evacuation orders and warnings near Old Station
- 25 (District 3).
- 26 e. September 9, 2021: Dixie fire evacuation warning new Old Station (District 3).
- 27
- 28

1 44. Three of these days were not included in the 29 days with Unhealthy AQI ratings (or
2 worse) listed above because. These dates are August 23 to 25. At the Anderson monitoring
3 station, the AQI on these dates was 100, 119, and 84. At the Redding station, the AQI data was
4 104, 102, and 71. These ratings are not good by any stretch of the imagination, but they were not
5 as bad when the fires were less active. Because Redding and Anderson are a considerable distance
6 from the monitoring areas, the County's AQI data does not show how bad the air actually was in
7 the outlying portions of the County.

8 **C. Effect of Air Quality and Evacuations on Petitioners' Activities**

9 45. Shasta County's unhealthy air during this time period has affected Petitioners as follows:

- 10 a. Circulators could not walk door-to-door in residential areas seeking signatures on
11 the petitions.
12 b. Circulators could not sit outside businesses soliciting signatures.
13 c. Residents were less willing to open their doors to talk to those circulators who
14 ignored the health warnings about going outside when the air was so unhealthy.
15 d. Residents were less willing to go out and limited their travel. Those that did were
16 less willing to linger outside and talk to the circulators who ignored the health
17 warnings about going outside when the air was so unhealthy.
18

19 46. In sum, most circulators heeded the health warnings or were otherwise unable to engage
20 in petitioning due to one fire effect or another. Those who tried to collect signatures regardless of
21 the circumstances were significantly hampered in their efforts.

22 47. Besides air quality concerns, evacuation orders had the following impacts on Petitioners'
23 activities:

- 24 a. Circulators could not go door-to-door or sit outside businesses in the evacuation
25 areas.
26 b. Road closures through evacuation areas limited everyone's ability to travel
27 through parts of the County. Circulators could not get to locations that were open,
28

1 and non-evacuated residents could not get through locations that were closed
2 (when going to other open areas).

3 48. In many respects, the effect of the evacuations and poor air quality was comparable to the
4 closure orders during the earliest stages of the COVID-19 pandemic.

5 49. Petitioners' difficulties are not limited to their efforts going into the districts in question.
6 Petition circulators are not limited to Shasta County residents, and Petitioners' effort is
7 important to people throughout North State. Volunteers and paid circulators from throughout
8 the region have had issues in their home communities that have affected their ability to
9 participate in Petitioners' effort. For example, Trinity County has been hit harder by fires and has
10 more evacuations and worse air quality. A Trinity County resident that would participate in
11 Petitioners' effort under normal circumstances would not be able to do so because fire-related
12 problems present a more pressing personal concern.

13 WRIT OF MANDATE

14 50. Writ of mandate is authorized by section 1085 of the Code of Civil Procedure. As used in
15 section 1085, Respondent is "inferior" to this Court and has a duty to uphold the California
16 Constitution when fulfilling her duties under the Elections Code. However, because the Elections
17 Code dictates a 120-day limit, it will take an order from this court that the 120-limit, as applied to
18 Petitioners' effort, unconstitutionally infringes on their initiative, referendum, and recall right.
19 There is no other remedy, plain, speedy, or otherwise adequate to remedy the wrong that will
20 occur if Petitioners' deadline is not extended. Petitioners are beneficially interested in this action
21 both because they are proponents of the recall in question and because there is a public interest in
22 ensuring the government's compliance with the California Constitution. Respondents will have
23 notice and, with the urgency contemplated in section 35 of the Code of Civil Procedure, a
24 peremptory writ can issue in the first instance or an expedited basis after an alternative writ and
25 order to show cause.

26 51. Additionally, writ of mandate is specifically authorized by section 13314 of the Elections
27 Code, which authorizes writ relief when it is alleged that an error or omission is about to occur
28

1 with respect to an official election matter or that a neglect of duty has occurred or is about to
2 occur. Here, the neglected duty is application of the state and federal constitutions to extend the
3 unconstitutionally short 120-day deadline to submit the recall petitions. As required by this
4 section, Petitioners include individual electors in each of the three supervisorial districts. To
5 satisfy the requirements of this section, the individual Petitioners are electors in the applicable
6 supervisorial districts. This action cannot interfere with the conduct of any election because the
7 Elections Code contemplates a special election for recalls that qualify and there is otherwise no
8 other election that this action might interfere with.

9 52. Petitioners have acted diligently in attempting to comply with all statutory requirements
10 and believe they would have been able to satisfy all statutory requirements but for the impact of
11 the fires in Shasta County.

12 CAUSES OF ACTION

13 **I. FIRST CAUSE OF ACTION — CAL. CONST., ART. II, § 13**

14 53. Petitioner realleges and incorporates by reference each preceding paragraph.

15 54. Respondent and those acting by and through her authority have a clear, present, and
16 ministerial duty to refrain from taking action to implement or enforce provisions of law in
17 violation of the Constitution and take such action as is necessary to allow Petitioners to exercise
18 the right of recall as provided for in the section 13 of article II of the California Constitution.

19 **II. SECOND CAUSE OF ACTION — U.S. CONST. AMENDS. I & XIV**

20 55. Petitioner realleges and incorporates by reference paragraphs 1 through 52.

21 56. The current 120-day deadline is unconstitutional and unenforceable as applied in light of
22 the fire emergencies that are affecting Shasta County. The 120-day deadline deprives those
23 seeking to circulate and sign the recall petitions of their rights under the First Amendment to the
24 United States Constitution, as applied to the state through the Fourteenth Amendment.

25 57. Respondent and those acting buy and through her authority have a clear, present, and
26 ministerial duty to refrain from taking action to implement or enforce provisions of law in
27
28

1 violation of the United States and take such action as is necessary to allow Petitioners to exercise
2 the right of recall as provided for in the California Constitution.

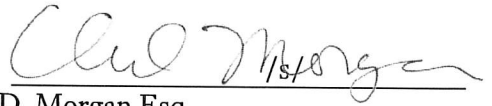
3
4 **PRAYER FOR RELIEF**

5 Wherefore, Petitioner prays that the Court:

- 6 1. Issue a writ of mandate commanding Respondent to extend the deadline for Petitioners to
7 submit their recall petitions as necessary to protect the constitutional right of initiative,
8 referendum, and recall for Petitioners and those signing Petitioners' recall petitions;
9 2. Award Petitioners their attorneys' fees and costs reasonably incurred herein; and
10 3. For such other and further relief as the Court deems proper; and
11 4. That the Court retain jurisdiction over this matter.

12
13 DATE: September 14, 2021

Respectfully Submitted,
LAW OFFICE OF CHAD D. MORGAN

15
16 By: 
17 Chad D. Morgan Esq.
18 Attorney for All Petitioners
19
20
21
22
23
24
25
26
27
28

1
2
3
4
5
6
7
8
9
0
1
2
3
4
5
6
7
8
9
0
1
2
3
4
5
6
7

3

I am the attorney for all Petitioners. Petitioners are located in Shasta County and are absent from the county where I have my office, which is San Bernardino County. For that reason, I am making this verification for them and on their behalf. I have read the foregoing **Verified Petition Writ of Mandate** and know its contents. I am informed and believe, and on that basis allege, that the matters stated in the Petition are true. I declare under the penalty of perjury under the laws of the State of California that foregoing is true and correct.

Executed on September 14, 2021.

Chad D. Morgan

EXHIBIT 1

EXHIBIT 1

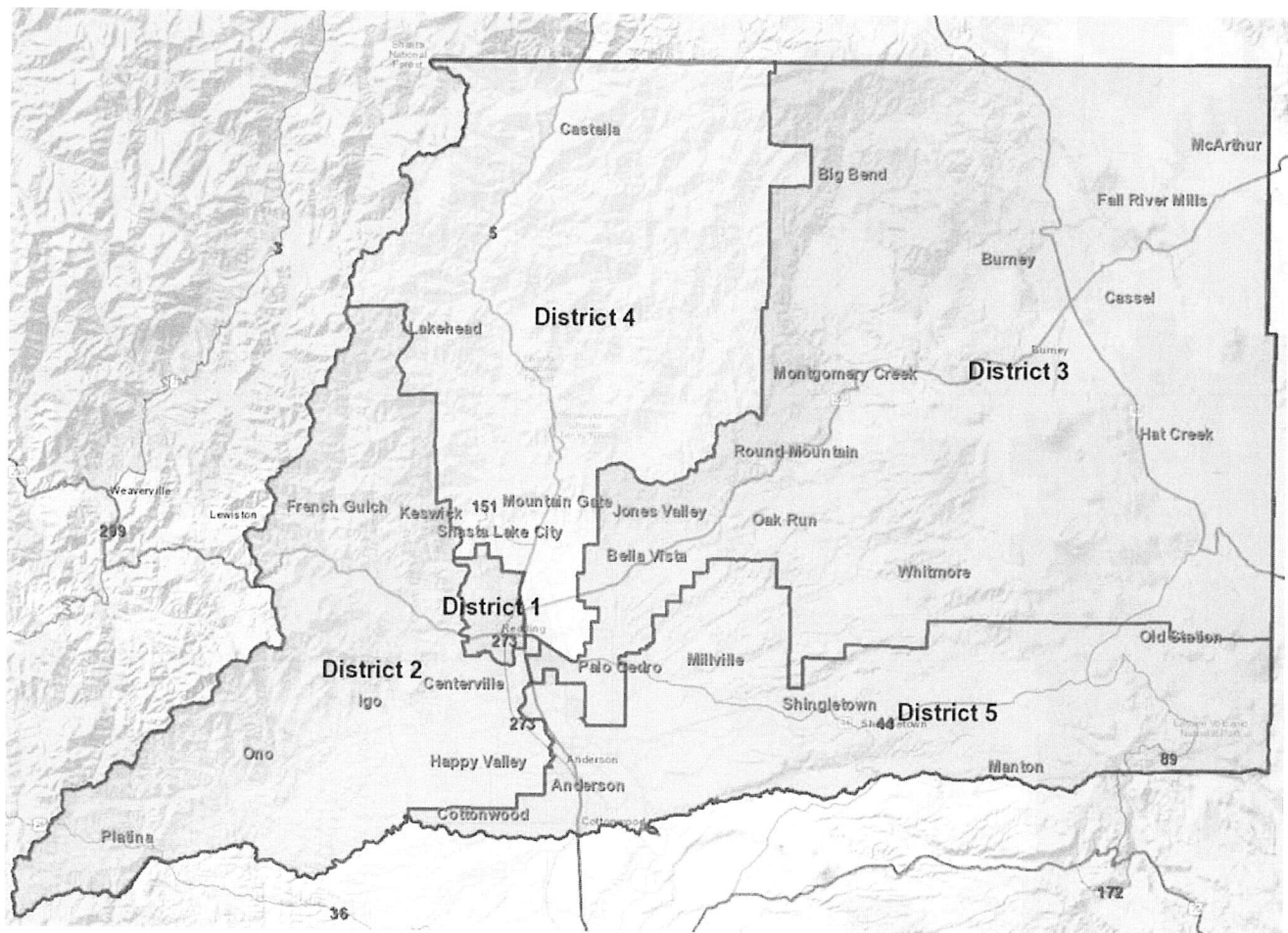


EXHIBIT 2

EXHIBIT 2



Supervisory District 1

Adopted: September 27, 2011

Ordinance Number: 493-12



DISCLAIMER:

The district boundaries used in this map were derived from several digital databases in the Shasta County Clerk Registrar of Voters Office. Although we strive to provide the best data we can, we sometimes use data developed by sources outside Shasta County. Therefore, the Shasta County Clerk Registrar of Voters Office cannot accept responsibility for any errors, omissions, or positional accuracy, and therefore, there are no warranties which accompany this product. This product is for informational purposes and has not been prepared for, or be suitable for legal, engineering, or surveying purposes. The Shasta County Clerk Registrar of Voters Office reserves the right to modify, update, change or make improvements at anytime, without notice, and assumes no liability for damages incurred directly or indirectly as a result of errors, omissions or discrepancies.

0 .5 1 1.5
Miles

EXHIBIT 3

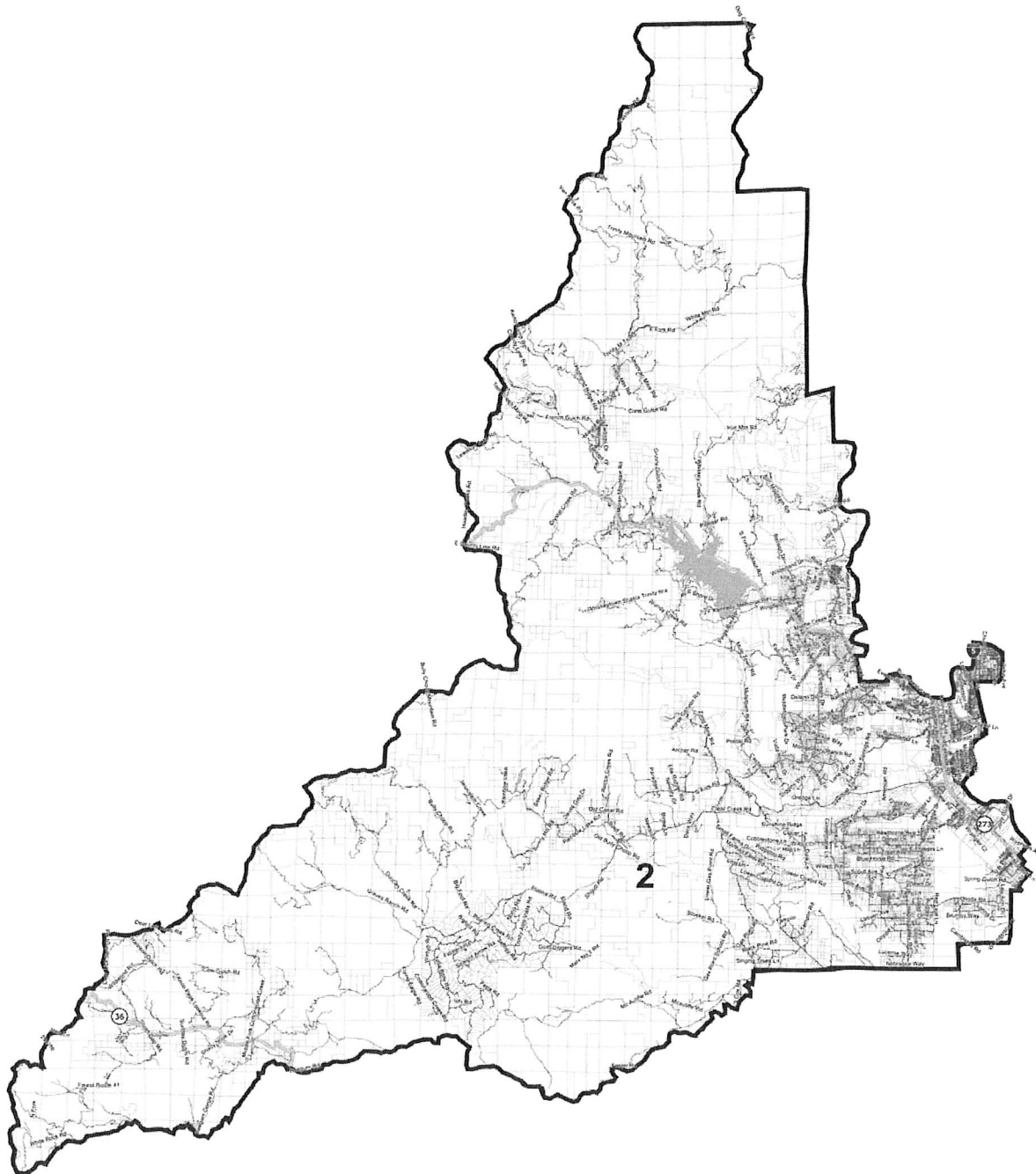
EXHIBIT 3



Supervisory District 2

Adopted: September 27, 2011

Ordinance Number: 493-12



DISCLAIMER:

The district boundaries used in this map were derived from several digital databases in the Shasta County Clerk Registrar of Voters Office. Although we strive to provide the best data we can, we sometimes use data developed by sources outside Shasta County. Therefore, the Shasta County Clerk Registrar of Voters Office cannot accept responsibility for any errors, omissions, or positional accuracy, and therefore, there are no warranties which accompany this product. This product is for informational purposes and has not been prepared for, or be suitable for legal, engineering, or surveying purposes. The Shasta County Clerk Registrar of Voters Office reserves the right to modify, update, change or make improvements at anytime, without notice, and assumes no liability for damages incurred directly or indirectly as a result of errors, omissions or discrepancies.

0 3.3 6.7 10
Miles

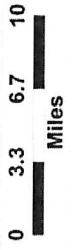
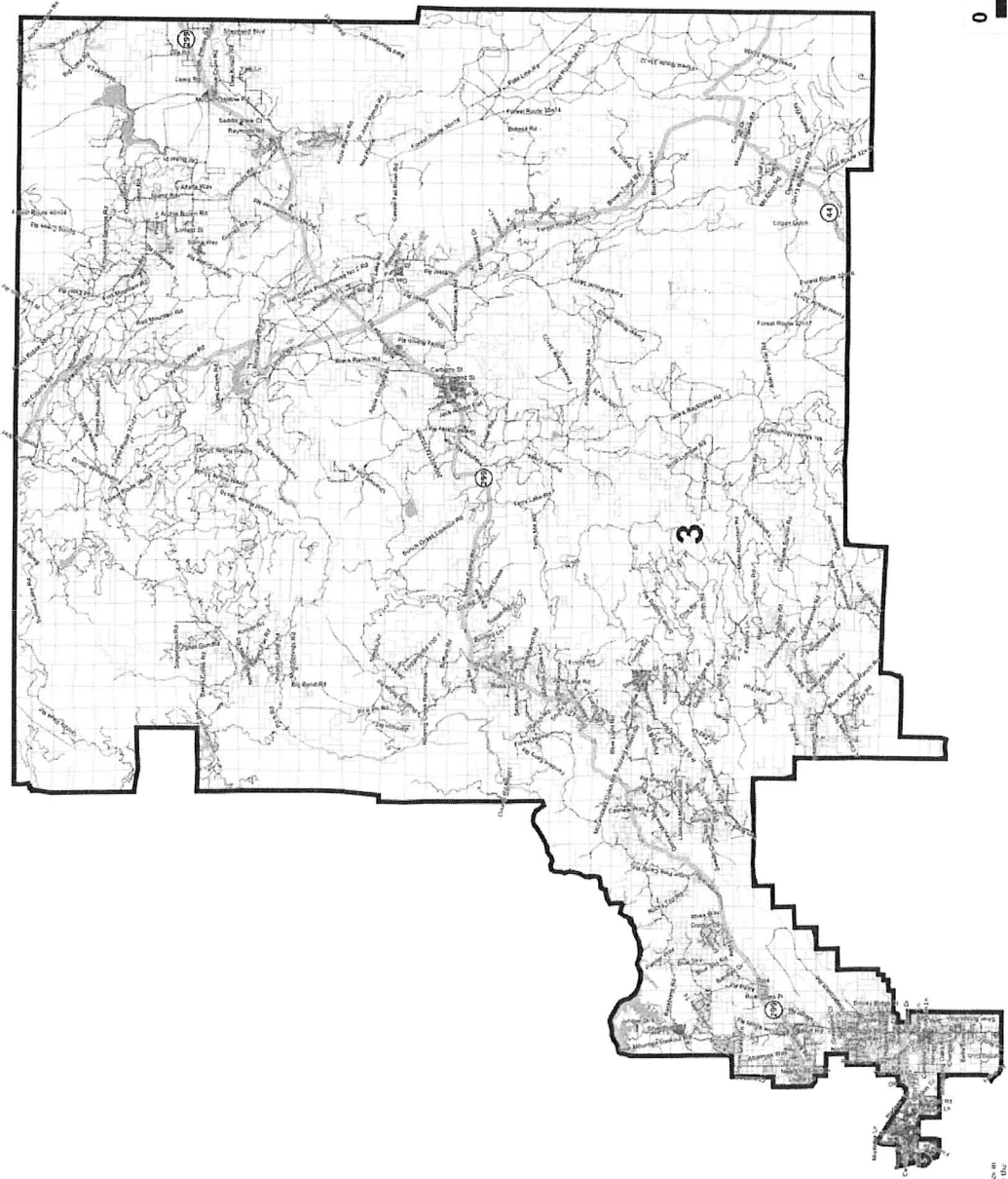
EXHIBIT 4

EXHIBIT 4



Supervisory District 3

Adopted: September 27, 2011
Ordinance Number: 493-12



DISCLAIMER
The district boundaries used in this map were derived from several digital databases in the public domain, including the National Ties and Land Information System (NTLIS), the National Wetlands Inventory (NWI), the National Hydrography Dataset (NHD), and the National Vector Map (NVM). Therefore, the Shasta County Clerk-Registrar of Voters Office cannot accept any responsibility for errors or omissions in the map. This product is for informational purposes only and has not been prepared for, or is suitable for, legal, engineering, or surveying purposes. The Shasta County Clerk-Registrar of Voters Office reserves the right to modify, update, and delete the map at any time without notice. No warranty is made by the County of Shasta or the Clerk-Registrar of Voters Office as to the accuracy or completeness of the information, or as to the results of its use, or as to any damages incurred directly or indirectly as a result of errors, omissions or discrepancies.

EXHIBIT 5

EXHIBIT 5

Shasta County

Air Quality Management District

1855 Placer Street, Suite 101

Redding, California 96001 Phone: (530) 225-5674

AIR QUALITY ADVISORY

FOR IMMEDIATE RELEASE

Date: July 23, 2021 - July 26, 2021

Contact: Shasta County Air Quality Management District, 530-225-5674

AIR QUALITY OFFICIALS URGE CAUTION DUE TO WILDFIRE SMOKE

SHASTA COUNTY – The Shasta County Air Quality Management District is advising Shasta County residents, to remain aware of potential smoke impacts due to multiple wildfires burning in Northern California as well as southern Oregon. Wildfire smoke may transport varying amounts of wildfire smoke into the populated areas of Shasta County. **Eastern Shasta County communities of Shingletown, Old Station, Burney, and Fall River Mills may experience overnight and morning smoke impacts.** Certain areas may experience higher concentrations of smoke based on proximity to wildfires, time of day, and current weather conditions. All members of the public, especially those with respiratory or heart disease, the elderly, pregnant women, and children should remain alert, and if necessary, reduce or avoid all outdoor exertion when wildfire smoke is present. Everyone else should limit prolonged exertion in areas of noticeable smoke accumulation. Individuals wishing to minimize their exposure should:

- Limit exercise and outdoor activities
- Remain indoors with the windows and doors closed
- Turn on an air conditioner with a recirculation setting (such as in a vehicle)

Some areas of Shasta County may be experiencing higher concentrations of smoke than others depending on wind patterns and topography. All individuals are urged to use proper judgement when planning activities. The District, California Air Resources Board (CARB), and the EPA highly recommend using the EPA's Fire & Smoke Map (<https://fire.airnow.gov>) for air quality smoke impacts and current AQI information. Although there are alternative websites with similar information, this

website provides the best information for viewing smoke maps, deployed PM2.5 wildfire monitors, and corrected sensor information. The District website also provides links to the latest and most accurate information available on wildfire smoke impacts and how to protect yourself from smoke.

Some areas of Shasta County may be experiencing higher concentrations of smoke than others depending on wind patterns and topography. All individuals are urged to use proper judgement when planning activities.

For additional information and updates, you may visit the [Shasta County Air Quality Management District Wildfire Smoke Webpage](#) or call 530-225-5674.

Additional safety tips can be found by going to Shasta County Health And Human Services [Protect yourself from wildfire smoke](#) webpage.

#

Shasta County

Air Quality Management District

1855 Placer Street, Suite 101

Redding, California 96001 Phone: (530) 225-5674

AIR QUALITY ADVISORY

FOR IMMEDIATE RELEASE

Date: July 30, 2021 – August 01, 2021

Contact: Shasta County Air Quality Management District, 530-225-5674

AIR QUALITY OFFICIALS URGE CAUTION DUE TO WILDFIRE SMOKE

SHASTA COUNTY – The Shasta County Air Quality Management District is advising Shasta County residents to remain aware of potential smoke impacts due to multiple wildfires burning in Northern California. Winds may transport varying amounts of wildfire smoke into the populated areas of Shasta County. Certain areas may experience higher concentrations of smoke based on proximity to wildfires, time of day, topography and current weather conditions. **Eastern Shasta County communities of Shingletown, Old Station, Burney, and Fall River Mills may experience overnight and morning smoke impacts.**

All members of the public, especially those with respiratory or heart disease, the elderly, pregnant women, and children should remain alert, and if necessary, reduce or avoid all outdoor exertion when wildfire smoke is present. Everyone else should limit prolonged exertion in areas of noticeable smoke accumulation. All individuals are urged to use proper judgement when planning activities. Individuals wishing to minimize their exposure should:

- Limit exercise and outdoor activities
- Remain indoors with the windows and doors closed
- Turn on an air conditioner with a recirculation setting (such as in a vehicle)

The District, California Air Resources Board (CARB), and the EPA highly recommend using the EPA's Fire & Smoke Map (<https://fire.airnow.gov>) for air quality smoke impacts and current AQI information. Although there are alternative websites with similar information, this website provides the

best information for viewing smoke maps, deployed PM2.5 wildfire monitors, and corrected sensor information. The District website also provides links to the latest and most accurate information available on wildfire smoke impacts and how to protect yourself from smoke.

For additional information and updates, you may visit the [Shasta County Air Quality Management District Wildfire Smoke Webpage](#) or call 530-225-5674.

Additional safety tips can be found by going to Shasta County Health And Human Services [Protect yourself from wildfire smoke](#) webpage.

#

Shasta County

Air Quality Management District

1855 Placer Street, Suite 101

Redding, California 96001 Phone: (530) 225-5674

AIR QUALITY UPDATE

FOR IMMEDIATE RELEASE

Date: August 4, 2021

Contact: Shasta County Air Quality Management District, 530-225-5674

AIR QUALITY OFFICIALS URGE CAUTION DUE TO WILDFIRE SMOKE

SHASTA COUNTY – The Shasta County Air Quality Management District is advising Shasta County residents, to remain aware of potential smoke impacts due to multiple wildfires burning in Northern California. Winds may transport varying amounts of wildfire smoke into the populated areas of Shasta County. Certain areas may experience higher concentrations of smoke based on proximity to wildfires, time of day, topography, and current weather conditions. While all residents of Shasta County are expected to be impacted, residents in the eastern Shasta County communities of Shingletown, Old Station, Burney, and Fall River Mills may experience impacts due to the Dixie fire. In addition, northern and western Shasta County residents in the areas of Dunsmuir, Castella, Platina, Igo, and French Gulch may experience impacts from fires burning in the Shasta Trinity National Forest. These impacts are expected to be concentrated in the late evening and early morning hours with smoke dispersing to the north during the afternoons.

All members of the public, especially those with respiratory or heart disease, the elderly, pregnant women, and children should remain alert, and if necessary, reduce or avoid all outdoor exertion when wildfire smoke is present. Everyone else should limit prolonged exertion in areas of noticeable smoke accumulation. All individuals are urged to use proper judgement when planning activities. Individuals wishing to minimize their exposure should:

- Limit exercise and outdoor activities.
- Remain indoors with the windows and doors closed.
- Turn on an air conditioner with a recirculation setting (such as in a vehicle).

The District, California Air Resources Board (CARB), and the EPA highly recommend using the EPA's Fire & Smoke Map (<https://fire.airnow.gov>) for air quality smoke impacts and current AQI information. Although there are alternative websites with similar information, this website provides the best information for viewing smoke maps, deployed PM2.5 wildfire monitors, and corrected sensor information. The District website also provides links to the latest and most accurate information available on wildfire smoke impacts and how to protect yourself from smoke.

For additional information and updates, you may visit the [Shasta County Air Quality Management District Wildfire Smoke Webpage](#) or call 530-225-5674.

Additional safety tips can be found by going to Shasta County Health And Human Services [Protect yourself from wildfire smoke](#) webpage.

#

Shasta County

Air Quality Management District

1855 Placer Street, Suite 101

Redding, California 96001 Phone: (530) 225-5674

AIR QUALITY UPDATE

FOR IMMEDIATE RELEASE

Date: August 5, 2021

Contact: Shasta County Air Quality Management District, 530-225-5674

AIR QUALITY OFFICIALS URGE CAUTION DUE TO WILDFIRE SMOKE

SHASTA COUNTY – The Shasta County Air Quality Management District is advising Shasta County residents, to remain aware of potential smoke impacts due to multiple wildfires burning in Northern California. Winds may transport varying amounts of wildfire smoke into the populated areas of Shasta County. Certain areas may experience higher concentrations of smoke based on proximity to wildfires, time of day, topography, and current weather conditions. **The National Weather Service is forecasting a change in wind direction starting Friday, August 6, 2021. This change in wind direction will likely bring significant widespread smoke impacts to residents of Shasta County.**

All members of the public, especially those with respiratory or heart disease, the elderly, pregnant women, and children should remain alert, and if necessary, reduce or avoid all outdoor exertion when wildfire smoke is present. Everyone else should limit prolonged exertion in areas of noticeable smoke accumulation. All individuals are urged to use proper judgement when planning activities. Individuals wishing to minimize their exposure should:

- Limit exercise and outdoor activities
- Remain indoors with the windows and doors closed
- Turn on an air conditioner with a recirculation setting (such as in a vehicle)

The District, California Air Resources Board (CARB), and the EPA highly recommend using the EPA's Fire & Smoke Map (<https://fire.airnow.gov>) for air quality smoke impacts and current AQI information. Although there are alternative websites with similar information, this website provides the best information for viewing smoke maps, deployed PM2.5 wildfire monitors, and corrected sensor information. The District website also provides links to the latest and most accurate information available on wildfire smoke impacts and how to protect yourself from smoke.

For additional information and updates, you may visit the [Shasta County Air Quality Management District Wildfire Smoke Webpage](#) or call 530-225-5674.

Additional safety tips can be found by going to Shasta County Health And Human Services [Protect yourself from wildfire smoke](#) webpage.

#

Shasta County

Air Quality Management District

1855 Placer Street, Suite 101

Redding, California 96001 Phone: (530) 225-5674

AIR QUALITY UPDATE

FOR IMMEDIATE RELEASE

Date: August 11-13, 2021

Contact: Shasta County Air Quality Management District, 530-225-5674

AIR QUALITY OFFICIALS URGE CAUTION DUE TO WILDFIRE SMOKE

SHASTA COUNTY – The Shasta County Air Quality Management District is advising Shasta County residents, to remain aware of continued significant widespread smoke impacts due to the multiple wildfires burning in Northern California. Certain areas may experience higher concentrations of smoke based on proximity to wildfires, time of day, topography and current weather conditions. **To best protect yourself from wildfire smoke residents are advised to check air quality smoke impacts in real time and in your area at <https://fire.airnow.gov>.** In addition, safety tips can be found by going to Shasta County Health And Human Services [Protect yourself from wildfire smoke](#) webpage.

All members of the public, especially those with respiratory or heart disease, the elderly, pregnant women, and children should remain alert, and if necessary, reduce or avoid all outdoor exertion when wildfire smoke is present. Everyone else should limit prolonged exertion in areas of noticeable smoke accumulation. All individuals are urged to use proper judgement when planning activities. Individuals wishing to minimize their exposure should:

- Limit exercise and outdoor activities
- Remain indoors with the windows and doors closed
- Turn on an air conditioner with a recirculation setting (such as in a vehicle)

For additional information and updates, you may visit the [Shasta County Air Quality Management District Wildfire Smoke Webpage](#) or call 530-225-5674.

#

Shasta County

Air Quality Management District

1855 Placer Street, Suite 101

Redding, California 96001 Phone: (530) 225-5674

AIR QUALITY UPDATE

FOR IMMEDIATE RELEASE

Date: August 13-15, 2021

Contact: Shasta County Air Quality Management District, 530-225-5674

AIR QUALITY OFFICIALS URGE CAUTION DUE TO WILDFIRE SMOKE *LOS FUNCIONARIOS DE CALIDAD DEL AIRE PIDAN PRECAUCIÓN DEBIDO AL HUMO DE INCENDIOS*

SHASTA COUNTY – The Shasta County Air Quality Management District is advising Shasta County residents, to remain aware of continued significant widespread smoke impacts due to the multiple wildfires burning in Northern California. Certain areas may experience higher concentrations of smoke based on proximity to wildfires, time of day, topography and current weather conditions.

To best protect yourself from wildfire smoke residents are advised to check air quality smoke impacts in real time and in your area at <https://fire.airnow.gov>. In addition, safety tips can be found by going to the California Smoke blog's [smoke and health information](#).

Para protegerse mejor del humo de los incendios forestales, se recomienda a los residentes que verifiquen los impactos del humo de la calidad del aire en tiempo real y en su área en <https://fire.airnow.gov>. Además, consejos de seguridad se pueden encontrar yendo a la información [humo y la salud](#) del blog de humo California.

All members of the public, especially those with respiratory or heart disease, the elderly, pregnant women, and children should remain alert, and if necessary, reduce or avoid all outdoor exertion when wildfire smoke is present. Everyone else should limit prolonged exertion in areas of noticeable smoke accumulation. All individuals are urged to use proper judgement when planning activities. Individuals wishing to minimize their exposure should:

- Limit exercise and outdoor activities

- Remain indoors with the windows and doors closed
- Turn on an air conditioner with a recirculation setting (such as in a vehicle)

For additional information and updates, you may visit the [Shasta County Air Quality Management District Wildfire Smoke Webpage](#) or call 530-225-5674.

#

Shasta County

Air Quality Management District

1855 Placer Street, Suite 101

Redding, California 96001 Phone: (530) 225-5674

AIR QUALITY UPDATE

FOR IMMEDIATE RELEASE

Date: August 16, 2021

Contact: Shasta County Air Quality Management District, 530-225-5674

AIR QUALITY OFFICIALS URGE CAUTION DUE TO WILDFIRE SMOKE

LOS FUNCIONARIOS DE CALIDAD DEL AIRE PIDAN PRECAUCIÓN DEBIDO AL HUMO DE INCENDIOS

SHASTA COUNTY – The Shasta County Air Quality Management District is advising Shasta County residents, to remain aware of continued significant widespread smoke impacts due to the multiple wildfires burning in Northern California. Certain areas may experience higher concentrations of smoke based on proximity to wildfires, time of day, topography, and current weather conditions.

Some areas of Shasta County will experience periods of Unhealthy to Hazardous air quality during this week. To best protect yourself from wildfire smoke, residents are advised to check air quality smoke impacts in real time and in your area at <https://fire.airnow.gov>. In addition, specific fire information and smoke safety tips can be found by going to the California Smoke blog's [smoke and health information](#).

Para protegerse mejor del humo de los incendios forestales, se recomienda a los residentes que verifiquen los impactos del humo de la calidad del aire en tiempo real y en su área en <https://fire.airnow.gov>. Además, consejos de seguridad se pueden encontrar yendo a la información [humo y la salud](#) del blog de humo California.

All members of the public, especially those with respiratory or heart disease, the elderly, pregnant women, and children should remain alert, and if necessary, reduce or avoid all outdoor exertion when wildfire smoke is present. Everyone else should limit prolonged exertion in areas of noticeable smoke accumulation. All individuals are urged to use proper judgement when planning activities. Individuals wishing to minimize their exposure should:

- Limit exercise and outdoor activities
- Remain indoors with the windows and doors closed
- Turn on an air conditioner with a recirculation setting (such as in a vehicle)

For additional information and updates, you may visit the [Shasta County Air Quality Management District Wildfire Smoke Webpage](#) or call 530-225-5674.

#

Shasta County

Air Quality Management District

1855 Placer Street, Suite 101

Redding, California 96001 Phone: (530) 225-5674

AIR QUALITY UPDATE

FOR IMMEDIATE RELEASE

Date: August 20 - 22, 2021

Contact: Shasta County Air Quality Management District, 530-225-5674

AIR QUALITY OFFICIALS URGE CAUTION DUE TO WILDFIRE SMOKE

LOS FUNCIONARIOS DE CALIDAD DEL AIRE PIDAN PRECAUCIÓN DEBIDO AL HUMO DE INCENDIOS

SHASTA COUNTY – The Shasta County Air Quality Management District is advising Shasta County residents, to remain aware of continued significant widespread smoke impacts due to the multiple wildfires burning in Northern California. Certain areas may experience higher concentrations of smoke based on proximity to wildfires, time of day, topography, and current weather conditions.

While air quality has improved somewhat in recent days, many areas of Shasta County will continue to experience air quality in the Unhealthy range going into the weekend. To best protect yourself from wildfire smoke, residents are advised to check air quality smoke impacts in real time and in your area at <https://fire.airnow.gov>. In addition, specific fire information and smoke safety tips can be found by going to the California Smoke blog's [smoke and health information](#).

Para protegerse mejor del humo de los incendios forestales, se recomienda a los residentes que verifiquen los impactos del humo de la calidad del aire en tiempo real y en su área en <https://fire.airnow.gov>. Además, consejos de seguridad se pueden encontrar yendo a la información [humo y la salud](#) del blog de humo California.

Now is a great time to set yourself up with a clean room! What is a clean room? A clean room is a room that is set up to keep levels of smoke and other particles as low as possible during wildfire smoke events. [Learn how to set up a clean room in your own home.](#)

All members of the public, especially those with respiratory or heart disease, the elderly, pregnant women, and children should remain alert, and if necessary, reduce or avoid all outdoor exertion when wildfire smoke is present. Everyone else should limit prolonged exertion in areas of noticeable smoke accumulation. All individuals are urged to use proper judgement when planning activities. Individuals wishing to minimize their exposure should:

- Limit exercise and outdoor activities
- Remain indoors with the windows and doors closed
- Turn on an air conditioner with a recirculation setting (such as in a vehicle)

For additional information and updates, you may visit the [Shasta County Air Quality Management District Wildfire Smoke Webpage](#) or call 530-225-5674.

#

Shasta County

Air Quality Management District

1855 Placer Street, Suite 101

Redding, California 96001 Phone: (530) 225-5674

AIR QUALITY UPDATE

FOR IMMEDIATE RELEASE

Date: August 26, 2021

Contact: Shasta County Air Quality Management District, 530-225-5674

AIR QUALITY OFFICIALS URGE CAUTION DUE TO WILDFIRE SMOKE *LOS FUNCIONARIOS DE CALIDAD DEL AIRE PIDAN PRECAUCIÓN DEBIDO AL HUMO DE INCENDIOS*

SHASTA COUNTY – The Shasta County Air Quality Management District is advising Shasta County residents, to remain aware of continued significant widespread smoke impacts due to the multiple wildfires burning in Northern California. Certain areas may experience higher concentrations of smoke based on proximity to wildfires, time of day, topography, and current weather conditions.

While air quality has improved somewhat in recent days, Redding, and other communities along the Sacramento River, as well as, the western areas of Shasta County will see conditions deteriorate today into the Unhealthy and Very Unhealthy categories. To best protect yourself from wildfire smoke, residents are advised to check air quality smoke impacts in real time and in your area at <https://fire.airnow.gov>. In addition, specific fire information and smoke safety tips can be found by going to the California Smoke blog's [smoke and health information](#).

Para protegerse mejor del humo de los incendios forestales, se recomienda a los residentes que verifiquen los impactos del humo de la calidad del aire en tiempo real y en su área en <https://fire.airnow.gov>. Además, consejos de seguridad se pueden encontrar yendo a la información [humo y la salud](#) del blog de humo California.

Now is a great time to set yourself up with a clean room! What is a clean room? A clean room is a room that is set up to keep levels of smoke and other particles as low as possible during wildfire smoke events. [Learn how to set up a clean room in your own home.](#)

All members of the public, especially those with respiratory or heart disease, the elderly, pregnant women, and children should remain alert, and if necessary, reduce or avoid all outdoor exertion when wildfire smoke is present. Everyone else should limit prolonged exertion in areas of noticeable smoke accumulation. All individuals are urged to use proper judgement when planning activities. Individuals wishing to minimize their exposure should:

- Limit exercise and outdoor activities
- Remain indoors with the windows and doors closed
- Turn on an air conditioner with a recirculation setting (such as in a vehicle)

For additional information and updates, you may visit the [Shasta County Air Quality Management District Wildfire Smoke Webpage](#) or call 530-225-5674.

#

Shasta County

Air Quality Management District

1855 Placer Street, Suite 101

Redding, California 96001 Phone: (530) 225-5674

AIR QUALITY UPDATE

FOR IMMEDIATE RELEASE

Date: August 30, 2021

Contact: Shasta County Air Quality Management District, 530-225-5674

AIR QUALITY OFFICIALS URGE CAUTION DUE TO WILDFIRE SMOKE *LOS FUNCIONARIOS DE CALIDAD DEL AIRE PIDAN PRECAUCIÓN DEBIDO AL HUMO DE INCENDIOS*

SHASTA COUNTY – The Shasta County Air Quality Management District is advising Shasta County residents, to remain aware of continued significant widespread smoke impacts due to the multiple wildfires burning in Northern California. Certain areas may experience higher concentrations of smoke based on proximity to wildfires, time of day, topography, and current weather conditions.

Extreme fire weather has led to increased fire behavior in many areas of Northern California. As a result, increased quantities of smoke have entered the Sacramento Valley and surrounding foothills in Shasta County. While there may be areas where some clearing will occur, many areas of Shasta County will experience UNHEALTHY to HAZARDOUS air quality over the next several days. Areas on the western side of the Sacramento River are expected to receive significant amounts of smoke from the fires burning to the north and west of Shasta County impacting these areas in the evening and nighttime hours with some improvement during the afternoons.

To best protect yourself from wildfire smoke, residents are advised to check air quality smoke impacts in real time and in your area at <https://fire.airnow.gov>. In addition, specific fire information and smoke safety tips can be found by going to the California Smoke blog's [smoke and health information](#).

Para protegerse mejor del humo de los incendios forestales, se recomienda a los residentes que verifiquen los impactos del humo de la calidad del aire en tiempo real y en su área en

<https://fire.airnow.gov>. Además, consejos de seguridad se pueden encontrar yendo a la información humo y la salud del blog de humo California.

Now is a great time to set yourself up with a clean room! What is a clean room? A clean room is a room that is set up to keep levels of smoke and other particles as low as possible during wildfire smoke events. Learn how to set up a clean room in your own home.

All members of the public, especially those with respiratory or heart disease, the elderly, pregnant women, and children should remain alert, and if necessary, reduce or avoid all outdoor exertion when wildfire smoke is present. Everyone else should limit prolonged exertion in areas of noticeable smoke accumulation. All individuals are urged to use proper judgement when planning activities. Individuals wishing to minimize their exposure should:

- Limit exercise and outdoor activities
- Remain indoors with the windows and doors closed
- Turn on an air conditioner with a recirculation setting (such as in a vehicle)

For additional information and updates, you may visit the Shasta County Air Quality Management District Wildfire Smoke Webpage or call 530-225-5674.

#

Shasta County

Air Quality Management District

1855 Placer Street, Suite 101

Redding, California 96001 Phone: (530) 225-5674

AIR QUALITY UPDATE

FOR IMMEDIATE RELEASE

Date: September 3-6, 2021

Contact: Shasta County Air Quality Management District, 530-225-5674

**AIR QUALITY OFFICIALS URGE CAUTION DUE TO WILDFIRE SMOKE OVER
LABOR DAY WEEKEND**
***FUNCIONARIOS DE CALIDAD DEL AIRE PIDAN PRECAUCIÓN DEBIDO AL HUMO DE
INCENDIOS DURANTE EL FIN DE SEMANA DEL DÍA DE TRABAJO***

SHASTA COUNTY – The Shasta County Air Quality Management District is advising Shasta County residents, to remain aware of continued significant widespread smoke impacts due to the multiple wildfires burning in Northern California. Certain areas may experience higher concentrations of smoke based on proximity to wildfires, time of day, topography, and current weather conditions.

A forecasted change in weather over the holiday weekend will likely bring increasing amounts of wildfire smoke into the Sacramento Valley and surrounding foothills in Shasta County. While there may be areas where some clearing will occur, many parts of Shasta County will likely experience UNHEALTHY to HAZARDOUS air quality over the next several days. Smoke is expected to pool in the lower elevations within the Sacramento Valley with the most significant impacts on these areas being in the nighttime and early morning hours with some improvement during the afternoons.

To best protect yourself from wildfire smoke, residents are advised to check air quality smoke impacts in real time and in your area at <https://fire.airnow.gov>. In addition, specific fire information and smoke safety tips can be found by going to the California Smoke blog's [smoke and health information](#).

Para protegerse mejor del humo de los incendios forestales, se recomienda a los residentes que verifiquen los impactos del humo de la calidad del aire en tiempo real y en su área en

<https://fire.airnow.gov>. Además, consejos de seguridad se pueden encontrar yendo a la información humo y la salud del blog de humo California.

Now is a great time to set yourself up with a clean room! What is a clean room? A clean room is a room that is set up to keep levels of smoke and other particles as low as possible during wildfire smoke events. Learn how to set up a clean room in your own home.

All members of the public, especially those with respiratory or heart disease, the elderly, pregnant women, and children should remain alert, and if necessary, reduce or avoid all outdoor exertion when wildfire smoke is present. Everyone else should limit prolonged exertion in areas of noticeable smoke accumulation. All individuals are urged to use proper judgement when planning activities. Individuals wishing to minimize their exposure should:

- Limit exercise and outdoor activities
- Remain indoors with the windows and doors closed
- Turn on an air conditioner with a recirculation setting (such as in a vehicle)

For additional information and updates, you may visit the [Shasta County Air Quality Management District Wildfire Smoke Webpage](#) or call 530-225-5674.

#

Shasta County

Air Quality Management District

1855 Placer Street, Suite 101

Redding, California 96001 Phone: (530) 225-5674

AIR QUALITY UPDATE

FOR IMMEDIATE RELEASE

Date: September 8-9, 2021

Contact: Shasta County Air Quality Management District, 530-225-5674

AIR QUALITY OFFICIALS URGE CAUTION DUE TO WILDFIRE SMOKE *LOS FUNCIONARIOS DE CALIDAD DEL AIRE PIDAN PRECAUCIÓN DEBIDO AL HUMO DE INCENDIOS*

SHASTA COUNTY – The Shasta County Air Quality Management District is advising Shasta County residents, to remain aware of continued significant widespread smoke impacts due to the multiple wildfires burning in Northern California. Certain areas may experience higher concentrations of smoke based on proximity to wildfires, time of day, topography, and current weather conditions.

Extreme fire weather has led to increased fire behavior in many areas of Northern California. As a result, increased quantities of smoke have entered the Sacramento Valley and surrounding foothills in Shasta County. Over the next several days many areas of Shasta County are forecasted to experience UNHEALTHY air quality in the evening and morning hours with some improvement during the afternoons.

To best protect yourself from wildfire smoke, residents are advised to check air quality smoke impacts in real time and in your area at <https://fire.airnow.gov>. In addition, specific fire information and smoke safety tips can be found by going to the California Smoke blog's [smoke and health information](#).

Para protegerse mejor del humo de los incendios forestales, se recomienda a los residentes que verifiquen los impactos del humo de la calidad del aire en tiempo real y en su área en <https://fire.airnow.gov>. Además, consejos de seguridad se pueden encontrar yendo a la información [humo y la salud](#) del blog de humo California.

As Shasta County continues to experience periods of intense smoke, you can reduce your exposure. The California Air Resources Board's Smoke Ready California campaign has outlined steps you can take now to keep your family safe before and during wildfire season including information on home air purifiers.

All members of the public, especially those with respiratory or heart disease, the elderly, pregnant women, and children should remain alert, and if necessary, reduce or avoid all outdoor exertion when wildfire smoke is present. Everyone else should limit prolonged exertion in areas of noticeable smoke accumulation. All individuals are urged to use proper judgement when planning activities. Individuals wishing to minimize their exposure should:

- Limit exercise and outdoor activities
- Remain indoors with the windows and doors closed
- Turn on an air conditioner with a recirculation setting (such as in a vehicle)

For additional information and updates, you may visit the Shasta County Air Quality Management District Wildfire Smoke Webpage or call 530-225-5674.

#

EXHIBIT 6

EXHIBIT 6

Site: Anderson																									
Hourly AQI																									
Date (LST)	Mid	1am	2am	3am	4am	5am	6am	7am	8am	9am	10am	11am	noon	1pm	2pm	3pm	4pm	5pm	6pm	7pm	8pm	9pm	10pm	11pm	Max
07/01/2021	25	24	20	17	18	25	33	44	59	47	40	42	42	43	44	43	42	44	45	37	35	33	26	22	59
07/02/2021	19	18	20	28	29	31	37	60	74	99	129	134	85	64	56	49	45	40	40	44	53	44	27	21	134
07/03/2021	18	15	15	19	22	25	37	55	64	73	66	56	47	46	44	38	36	33	33	39	38	33	31	25	73
07/04/2021	22	15	6	5	7	16	35	51	54	53	48	50	46	43	36	42	41	38	40	37	40	36	34	32	54
07/05/2021	27	28	20	28	28	31	41	57	67	69	72	88	76	64	57	57	54	45	35	28	35	32	23	15	88
07/06/2021	16	18	23	23	16	8	19	44	58	55	53	49	44	35	29	30	35	37	30	31	32	33	28	23	58
07/07/2021	21	21	20	11	7	18	29	51	51	56	55	54	47	43	40	39	45	41	37	36	30	34	34	30	56
07/08/2021	21	19	18	15	27	29	41	52	52	52	47	40	36	41	37	35	41	41	35	32	32	35	35	41	52
07/09/2021	35	31	24	19	16	14	24	53	58	55	52	44	34	31	26	28	32	29	26	32	35	39	33	22	58
07/10/2021	19	20	14	11	11	16	32	51	51	54	54	54	52	54	55	51	52	52	48	41	42	45	38	27	55
07/11/2021	19	26	28	30	26	17	34	51	52	60	60	56	51	48	50	50	45	40	36	28	28	33	35	33	60
07/12/2021	27	17	8	10	13	29	34	51	52	46	52	47	44	45	38	33	31	28	30	30	32	38	36	26	52
07/13/2021	20	24	23	23	21	19	39	54	48	59	82	110	87	67	57	53	46	43	39	40	44	43	40	33	110
07/14/2021	28	30	33	35	38	33	52	58	59	50	47	43	43	39	37	40	36	32	32	31	38	41	39	34	59
07/15/2021	31	34	39	41	38	30	50	59	65	57	52	45	45	43	43	43	38	38	42	40	39	44	41	31	65
07/16/2021	27	23	17	23	25	24	41	51	54	54	59	48	39	40	44	43	39	34	29	26	32	44	38	34	59
07/17/2021	32	26	31	30	30	30	45	56	61	55	51	52	53	53	51	48	41	38	33	31	39	42	36	26	61
07/18/2021	25	28	25	22	16	12	27	56	56	55	54	52	53	48	45	47	43	41	48	55	52	52	54	47	56
07/19/2021	42	36	33	35	36	35	45	58	59	51	43	54	54	44	29	23	23	29	30	34	32	26	25	38	59
07/20/2021	30	17	14	15	13	12	28	54	55	50	48	45	38	31	30	31	33	35	37	41	38	32	25	21	55
07/21/2021	25	18	3	0	0	0	10	30	45	42	31	35	38	41	44	38	37	35	30	30	30	35	32	30	45
07/22/2021	37	37	32	33	27	20	28	40	46	45	40	35	25	38	54	63	55	52	51	51	58	61	50	40	63
07/23/2021	35	33	43	38	36	40	38	54	56	62	63	53	53	76	119	153	158	166	156	136	118	104	86	75	166
07/24/2021	71	80	96	106	127	151	153	154	156	158	157	152	146	140	123	106	91	72	61	58	53	46	34	33	158
07/25/2021	31	33	43	53	56	59	66	75	84	83	77	73	67	57	55	60	63	60	57	58	54	49	42	42	84
07/26/2021	40	38	36	35	33	30	28	33	32	28	30	30	32	33	43	49	42	30	26	32	33	31	28	25	49
07/27/2021	24	25	21	18	17	14	15	26	29	28	37	35	26	23	28	34	35	33	33	32	33	37	38	38	38
07/28/2021	44	39	37	36	35	37	52	67	67	70	67	65	56	46	41	45	40	33	29	23	25	28	26	23	70
07/29/2021	26	22	23	30	28	34	30	45	56	52	48	52	55	52	49	47	45	47	47	46	51	51	47	52	56
07/30/2021	51	42	35	38	35	38	36	48	52	59	58	71	69	76	75	77	78	125	144	144	137	115	94	86	144
07/31/2021	81	79	73	74	70	62	55	43	39	42	40	48	50	52	54	53	48	40	47	42	39	43	44	40	81

Site: Anderson																										
Hourly AQI																										
Date (LST)	Mid	1am	2am	3am	4am	5am	6am	7am	8am	9am	10am	11am	noon	1pm	2pm	3pm	4pm	5pm	6pm	7pm	8pm	9pm	10pm	11pm	Max	
08/01/2021	32	27	23	18	16	14	17	41	46	47	43	36	33	30	29	29	29	28	29	26	21	21	21	21	21	47
08/02/2021	20	18	16	16	14	20	30	40	41	39	34	31	28	26	26	52	65	56	56	52	41	33	23	21	22	65
08/03/2021	27	25	12	16	35	41	61	64	65	56	48	45	43	38	32	32	27	29	28	26	28	25	20	13	4	65
08/04/2021	0	5	13	23	13	11	49	54	67	63	66	69	65	59	52	43	38	40	33	33	53	59	48	40	31	69
08/05/2021	23	20	17	19	27	30	29	28	47	48	49	51	46	37	33	30	32	31	44	44	38	32	30	29	26	51
08/06/2021	37	38	54	54	56	56	61	60	71	159	171	165	160	160	0	0	0	122	120	120	115	117	121	121	165	171
08/07/2021	167	166	166	165	165	170	174	178	181	177	176	175	175	174	171	170	168	169	169	172	171	171	171	173	172	181
08/08/2021	171	170	170	170	171	171	172	173	173	175	178	180	180	180	179	163	153	126	133	146	151	140	135	126	127	180
08/09/2021	122	119	116	115	113	113	115	116	119	117	104	97	93	83	76	75	64	61	56	61	62	62	62	65	64	122
08/10/2021	60	54	54	49	48	48	47	54	63	71	75	85	107	110	106	106	106	101	95	80	67	58	58	56	54	110
08/11/2021	52	48	48	50	53	52	62	66	86	95	98	93	84	65	62	72	85	96	96	95	94	92	93	94	94	98
08/12/2021	85	88	85	76	66	60	61	72	91	111	131	136	120	124	151	158	163	155	148	101	101	77	64	59	62	163
08/13/2021	64	61	57	52	51	49	54	58	65	65	66	67	66	71	82	133	167	181	187	187	192	196	192	181	174	196
08/14/2021	169	165	164	162	157	155	155	180	179	168	159	163	176	188	186	178	174	169	163	163	157	157	154	146	131	188
08/15/2021	125	119	114	100	89	92	98	118	158	171	173	172	174	178	185	197	236	275	280	214	179	230	224	228	235	280
08/16/2021	96	90	88	85	80	80	81	83	90	137	158	172	182	186	186	189	196	204	223	230	230	230	224	228	235	235
08/17/2021	250	274	313	341	348	329	295	218	186	157	116	80	74	113	155	167	187	177	177	152	98	71	59	55	52	348
08/18/2021	44	60	91	154	178	188	180	161	186	186	151	111	91	78	77	78	77	81	129	129	161	167	173	176	173	188
08/19/2021	168	167	164	163	162	161	159	159	159	155	154	134	140	149	155	157	154	155	155	155	155	158	159	162	164	168
08/20/2021	163	161	158	155	156	155	155	145	125	112	112	115	133	153	158	159	159	159	157	157	156	153	149	151	151	163
08/21/2021	144	143	141	130	126	122	116	116	112	110	109	105	107	113	124	127	125	119	119	117	116	113	108	107	106	144
08/22/2021	107	107	109	109	108	108	107	108	114	119	125	128	142	149	141	136	131	131	117	109	106	99	95	95	88	149
08/23/2021	86	90	91	91	91	92	93	97	99	100	97	91	88	80	76	84	89	85	74	76	80	79	80	83	100	100
08/24/2021	85	86	83	80	80	80	80	81	80	80	67	68	72	85	109	119	114	101	84	71	66	65	65	63	62	119
08/25/2021	58	58	53	55	56	58	59	67	76	84	73	65	61	62	58	53	52	52	55	56	57	57	60	60	59	84
08/26/2021	59	70	81	84	85	87	88	85	89	95	97	100	98	109	116	113	131	153	156	159	163	167	167	167	172	172
08/27/2021	182	185	190	190	171	155	105	77	68	79	94	103	109	97	87	79	76	75	78	86	106	143	157	159	190	190
08/28/2021	155	146	130	121	123	135	152	155	154	138	109	92	89	103	135	154	155	157	159	159	161	161	159	158	159	161
08/29/2021	158	158	158	158	158	158	158	158	158	159	159	159	158	158	158	158	156	155	153	153	154	155	155	155	155	159
08/30/2021	155	154	154	153	152	152	152	152	153	153	160	181	195	186	172	160	147	120	112	112	110	106	103	105	111	195
08/31/2021	116	137	159	172	183	195	209	209	196	179	161	138	113	113	128	138	136	141	148	151	152	148	148	148	150	209

[illegible]

Site: Redding																											
Hourly AQI																											
Date (LST)	Mid	1am	2am	3am	4am	5am	6am	7am	8am	9am	10am	11am	noon	1pm	2pm	3pm	4pm	5pm	6pm	7pm	8pm	9pm	10pm	11pm	Max		
08/01/2021	25	21	19	11	10	11	12	25	37	37	35	32	30	30	21	27	13	11	10	13	13	0	0	3	8	37	
08/02/2021	10	18	19	16	25	23	18	28	26	23	16	27	24	24	30	25	46	46	38	48	40	33	29	29	27	48	
08/03/2021	30	28	20	25	27	24	30	40	52	55	45	39	36	36	26	21	29	15	7	18	18	3	11	7	5	55	
08/04/2021	9	8	13	13	25	50	60	69	83	95	86	72	69	69	56	46	23	5	13	19	3	12	25	35	38	95	
08/05/2021	36	28	18	13	17	10	13	25	31	34	36	33	29	29	27	30	25	29	33	35	36	37	41	39	49	49	
08/06/2021	55	59	65	71	72	71	72	66	80	155	163	173	174	169	159	152	130	126	184	184	314	399	436	411	403	436	
08/07/2021	401	377	335	319	297	269	254	255	225	199	187	181	179	174	171	170	168	167	172	172	174	175	175	175	175	401	
08/08/2021	174	174	174	174	175	175	175	175	179	184	183	184	186	186	182	162	149	135	127	134	142	148	151	149	149	186	
08/09/2021	140	141	136	138	138	135	133	133	134	137	136	134	106	106	87	74	69	51	54	49	35	32	41	53	53	141	
08/10/2021	54	53	52	54	53	53	52	52	63	78	84	118	138	138	139	123	116	113	116	109	93	79	70	59	57	139	
08/11/2021	57	56	63	65	67	66	70	83	95	106	113	99	85	76	77	89	87	87	87	82	81	82	82	84	84	113	
08/12/2021	84	72	83	106	136	158	162	160	159	158	157	160	156	159	163	163	164	164	161	133	93	72	60	55	53	164	
08/13/2021	50	44	45	58	57	57	64	74	83	77	84	85	148	153	163	166	175	177	177	178	180	180	183	184	184	184	
08/14/2021	182	180	178	176	174	174	180	179	173	174	169	164	170	187	196	196	190	190	181	174	170	169	168	173	178	196	
08/15/2021	185	190	190	190	189	188	189	191	194	198	199	199	198	199	219	278	286	291	308	294	205	173	355	395	406	413	308
08/16/2021	114	103	99	95	102	97	102	120	152	152	165	172	187	212	239	245	255	267	286	320	355	395	395	406	413	413	
08/17/2021	411	407	411	413	396	378	372	333	294	220	176	161	157	157	158	163	175	154	91	60	40	28	31	26	27	413	
08/18/2021	15	47	76	157	167	174	176	169	165	154	134	111	121	100	101	157	166	175	184	188	182	182	167	161	160	188	
08/19/2021	160	160	159	159	158	156	154	155	158	159	162	173	173	173	168	166	166	170	176	178	179	180	181	176	172	181	
08/20/2021	167	159	156	154	152	144	131	145	142	137	139	151	154	152	157	163	163	163	160	158	157	157	156	155	154	167	
08/21/2021	153	151	151	149	147	143	132	125	118	116	120	121	122	128	144	144	137	133	131	125	118	115	115	114	113	153	
08/22/2021	116	116	111	112	113	111	111	113	117	127	147	154	155	154	152	150	140	123	109	106	99	93	91	95	155	155	
08/23/2021	91	90	89	90	91	92	92	95	101	104	92	84	83	81	84	83	88	88	89	82	77	76	78	76	75	104	
08/24/2021	76	77	78	76	76	75	75	76	77	77	76	78	81	86	102	96	96	96	93	94	86	84	74	68	69	102	
08/25/2021	70	71	66	69	69	66	65	67	69	70	68	67	67	67	61	57	51	44	49	48	49	52	50	45	50	71	
08/26/2021	56	57	60	67	67	71	67	86	96	101	115	118	135	151	156	164	163	176	176	209	225	225	212	234	249	249	
08/27/2021	239	232	203	180	157	151	90	71	73	78	79	85	83	82	76	78	79	74	74	72	159	160	150	128	118	239	
08/28/2021	115	119	134	149	154	156	156	152	137	110	96	93	101	119	145	155	158	156	156	158	158	159	159	160	160	160	
08/29/2021	160	160	161	161	161	161	160	160	160	160	160	160	159	159	159	159	156	152	151	148	149	151	151	148	150	161	
08/30/2021	147	146	149	153	158	163	164	167	175	190	199	202	193	187	173	161	152	130	110	106	142	164	164	178	183	202	
08/31/2021	186	187	199	192	188	185	180	174	174	157	134	116	119	154	157	161	155	153	152	152	152	153	156	158	163	199	

EXHIBIT 7

EXHIBIT 7



EXHIBIT 8

EXHIBIT 8



SHASTA READY

Shasta County's Response to Local Emergencies

Select Language ▼

Google Translate service may not work with Internet Explorer.



[Shasta Ready](#)

[Wildfire](#)

Wildfire Overview

Wildfire Overview

Dixie Fire Information

Evacuation notice 9/9/21 @ 6:50 pm

The evacuation warnings for Zones 9-A and 9-B are being upgraded to ORDERS. Zones 9-A and B are forested areas.

9-A is an area east of Highway 89 just south of Hat Creek. It extends to the Shasta/Lassen County line. Zone 9-B extends from just east of Cinder Butte on the western edge to the Lassen/Shasta County line and north of Bald Mountain.

Evacuation notice 9/9/21

The Shasta County Sheriff's Office has issued an evacuation WARNING for all residents in Old Station Zone 3. This includes the area east of Highway 89 just north of Black Angus Lane, and north to the intersection of Highway 89 at Doty Road following Bidwell Road east to the Pacific Crest Trail.

Additionally, Zone 9 is also being placed in an Evacuation WARNING. This area is a forested area east of Zone 3 that extends to the Shasta/Lassen County line. Gather all pets, medications, important documents and be prepared to evacuate.

An evacuation WARNING is being issued for Zone 9-B. This is a forested area directly north of Zones 3 and 9 which were previously placed under a warning. Zone 9-B extends from just east of Cinder Butte on the western edge to the Lassen/Shasta County line and north of Bald Mountain.

An evacuation shelter has been set up at the Ward of Life Assembly Church at 37341 Main street in Burney.

Evacuation notice 9/8/21

An evacuation ORDER is being issued for the community of Old Station in Eastern Shasta County due to fire activity on the #DixieFire.

Residents of all roads between the Lassen National Park entrance and the Bridge Campground should leave immediately. Any residences on Highway 44 from the Lassen County line are also being evacuated.

Road closures are at the intersection of Highway 89 and 44 at the entrance of Lassen National Park and at the intersection of Highway 89 at Wilcox Road to the north of Old Station. Traffic is being diverted to northbound Highway 89. Highway 44 is closed at Road A21 on the Lassen County side.

A temporary evacuation point is being set up at the Safeway in Burney.

Evacuation notice 8/25/21

For the #DixieFire. An evacuation ORDER is being issued for:

- Hat Creek Rim east to the Shasta County line and south of Highway 44.

This is a forested area with no residences, but, due to potential for fire activity should not be occupied by the public.

Due to the current fire activity in the area north of Butte Lake, the Incident Management Team recommended that the communities in and around the Hat Creek Rim be made aware of the situation. We want the public to be prepared to leave if fire conditions change. At this time, the Dixie Fire is not progressing towards the community of Old Station.

Out of an abundance of caution, the Sheriff's Office is issuing an evacuation WARNING for:

- All residents and campers in Old Station and Hat Creek along both sides of Highway 44 from Big Pines Road north to Brains Way.

Residents under the warning should be prepared to leave the area in case of increased fire activity. This is the time to prepare valuable items such as important documents, prescription drugs and phone chargers, and to sign up for CodeRED alerts if you are not already enrolled

<https://public.coderedweb.com/CNE/en-US/BFBDCA5E730B>.

McFarland Fire Information:

Evacuation update 8/28/21

For the #McFarlandFire. As of 0800 Saturday all evacuation warnings issued by the Shasta County Sheriff's Office are being lifted. This includes the community of Platina and all Shasta County roadways off of Highway 36. This change affects Shasta County residents only. Residents of other counties are urged to get their information from their local authorities.

Residents are urged to remain cautious as fire personnel and equipment remain in the area.

Evacuation update 8/26/21

For the McFarlandFire. As of 12:00 noon all evacuation orders issued by the Shasta County Sheriff's Office are being reduced to evacuation warnings and citizens can return to their homes. This includes the community of Platina and all Shasta County roadways off of Highway 36. This change affects Shasta County residents only. Residents of other counties are urged to get their information from their local authorities.

As residents return home, they are urged to remain cautious as fire personnel and equipment remain in the area.

Evacuation update 8/16/21

For the #McFarlandFire. The Shasta County Sheriff's Office is issuing a mandatory evacuation ORDER for all residents within the township of Platina. The evacuation order includes all residences and roadways from the Trinity/Shasta County line east to the Shasta/Tehama County line. Residents are encouraged to use Platina Road as an evacuation route. There will be a temporary evacuation site at the Igo/Ono Elementary School.

For clarification on the mandatory evacuation ORDER issued earlier for residents within the township of Platina. The evacuation order includes all residences and roadways from White Rock Road and Highway 36 to the Shasta/Tehama County line. White Rock Road and Harrison Gulch Road are open and remain under an evacuation warning.

Per the Trinity County and Shasta County Sheriff's Office, as of Thursday, August 12, 2021 at 5:00 p.m., the following areas have been moved out of Evacuation Warning:

- Community of Wildwood
- Community of Post Mountain near the junction of Highway 36 and Highway 3
- Community of Trinity Pines
- Shields Road
- White Rock Road
- Harrison Gulch Road from Highway 36 to Deerlick Springs Road

The following areas remain under Evacuation Warning:

- Community of Platina
 - Both sides of Highway 36 from Sunday Gulch Road to the Shasta/Tehama County line
 - All roads to the south of Highway 36 from Sunday Gulch Road to the Shasta/Tehama County line including:
 - Beegum Gorge Road
 - Platinum Lane
 - Secluded Glen Lane
 - Shady Nook Drive
 - Beegum Road

All residents and visitors are reminded that the Shasta-Trinity National Forest has issued a closure order for the McFarland Fire, located in Trinity, Tehama and Shasta Counties. The order, Forest Order 14-21-22 (McFarland Fire Closure Order) was issued to protect public health and safety.

[McFarland Fire Incident Page](#)

Be alert! Situations can change rapidly amid critical fire conditions.

For information on fires in Shasta County and beyond, visit the [Wildfire Information Map](#) or [CalFire](#).

Those who are evacuated due to wildfires are urged by the California State Insurance Commissioner to contact their insurance provider. Evacuees may have homeowner or renter insurance to help with evacuation and relocation costs under Additional Living Expenses coverage, known as ALE. ALE coverage typically includes food and housing costs, furniture rental, relocation and storage, and extra transportation expenses. Other new consumer protections for wildfire survivors can be found [here](#).

Code Red Alerts

Register your cell phone for Code Red alerts from the Shasta Area Safety Communications Agency (SHASCOM-911).

[Register for Emergency Alerts](#)

Smoke and Air Quality

Wildfire smoke is a mix of gases and fine particles from burning vegetation, buildings, and other materials. Even someone who is healthy can get sick if there is enough smoke in the air.

[Air Quality Web Cam](#)

[Current Air Quality](#)

[Air Quality Advisories](#)

[Air Quality Management District Website](#)

Zogg Fire Cleanup

Resource Management has information regarding Zogg Fire State Debris Removal Program and current health and safety concerns.

Removing fire debris or disturbing the ash footprint may cause you to be ineligible for state/federal debris removal assistance. [More information](#)

[Resource Management](#)

[CalOES Debris Operations Dashboard](#)

Disaster Assistance

Shasta County was added to the [Presidential Major Disaster Declaration](#).

Zogg Fire victims may apply for federal assistance from FEMA to help pay for needs such as rent, home repair and replacement, medical costs, and other disaster-related expenses.

[Apply for Federal Assistance](#)

Zogg Fire Maps

See public damage assessments and household hazardous waste assessment and removal progress.

[Zogg Fire Public Map](#)

[DTSC Hazardous Waste Dashboard](#)

Wildfire Recovery

Local and statewide recovery resources are available for individuals impacted by wildfire.

[Carr Fire Recovery](#)

[Statewide Wildfire Recovery](#)

Fire Prevention

- [Defensible Space - Are You Ready?](#)
- [Make Your Home Fire Safe - Homeowners Checklist](#)
- [Firewise Landscaping and Construction Checklists](#)

After Wildfire

- [Floods Follow Fires](#)

- [Understanding Mudflows and NFIP](#)
- [Rebuilding After a Wildfire - FEMA Fact Sheet](#)

Inactive Incidents

These recent wildfire incidents are now inactive and fully contained. More incident information is at [CAL FIRE](#).

Zogg Fire

Wildfire

Wildfire Overview

[CAL FIRE](#)

[Current Air Quality](#)

[Register for Emergency Alerts](#)

[Shasta County Fire Department](#)

[Shasta County Sheriff's Office](#)

Shasta Ready

[Shasta Ready Overview](#)

[Emergency Job Matching](#)

[COVID-19](#)

[Public Safety Power Shutoff](#)

Wildfire

Social Media

<https://www.co.shasta.ca.us/ready/wildfire/overview>

Social Media

Shasta County HHSA:



#ShastaReady

[Return to top](#)



This is an official website of
Shasta County, California

Legal Disclaimer

Shasta Ready

Overview

COVID-19

Public Safety Power Shutoff

Wildfire

Resources

Emergency Job Matching

Social Media

Shasta County HHSA:



#ShastaReady